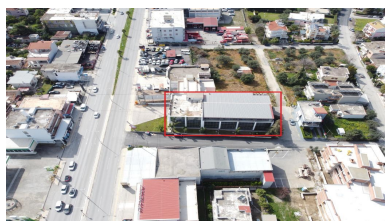




Price

Investment **FOR**



Total covered: 2945 m²

Plot area: 1396m²

For Sale, Investment, Mixed-Use Building, Achaia, Patra, 2,945 m², 1,396 m², € 2,383,495

Available through eaction commercial building 2.945sqm which is located in Patra at 155 New National Road Patra - Athens. Land plot 1.396sqm Construction year 2006 Elevator Parking spaces It consists of Basement B' 749.43sqm Basement A' 749.43sqm Ground Floor 749.43sqm 1st floor 667.03sqm Chamber 29.45sqm Auction Date To be announced Starting bid €2.383.495 Available exclusively by INFINITY